

# AEROMOB

## ILLUSTRATED PARTS CATALOGUE



EQUIPMENT NAME: FORKMOB 109  
PART NUMBER: AM-FRK-109-K01

# AEROMOB

## ILLUSTRATED PARTS CATALOGUE



Aeromob Aeronautical Equipment Ltda

CNPJ: 40.061.679/0001-43

Address: Carlos Willy Boehm 990 Street - Costa e Silva

Postcode: 89218-325 / Joinville - SC

Phone: +55 (47) 4101-2724 | 9 9937-9077

Site: [www.aeromob-industry.com](http://www.aeromob-industry.com)

Contact Aeromob for more information on  
parts and products.

# INTRODUCTION

The Illustrated Parts Catalog (IPC) must be used to identify parts and component replacement request. The IPC should never be used as a component removal, installation and maintenance procedure. This catalog is used in conjunction with the Equipment Maintenance Manual (MM). The structure of chapters and details used in this IPC follow the applicable standards as Air Transport Association (ATA) SPEC 100 and iSPEC 2200.

The catalog features:

1. A list of chapters;
2. An isometric view of the equipment with emphasis on the set shown in the chapter;
3. An exploded view of each equipment set and its respective list of components;
4. The numbering of the pages is composed initially by the number of the chapter and followed by chapter page number.

## PART DESIGNATION

AEROMOB parts are designated using the following code:

**AM-HDM-135-S01**

such that,

**AM:** AEROMOB

**HDM:** Represents the family of equipment

**135:** the equipment model

**S01:** represents the part-specific code.

On standard components purchased from third parties such as screws bearings, etc., the codes are varied, according to the necessary specification in each item. In some cases, manufacturers codes are also used.

AEROMOB special tools are designated with an "FM" prefix keeping then the identification code of the equipment to which it is applied.

**AEROMOB**

# INTRODUCTION

## PARTS AVAILABILITY

"YES" indicates the part is available as a separate replacement item.

"NO" indicates that the part is no longer available or is only available as part of a set.

## ABBREVIATIONS

BICROM - Bichromated

CL - Class

DISP - Parts availability

SS - Stainless steel

HS - Hexagon socket

WS - Worm shaft

TS - Top Shaft

## GUARANTEE

AEROMOB applies the standard 1-year warranty on parts and components purchased from AEROMOB or an authorized dealer.

## RETURNS

No unused parts may be returned to AEROMOB for credit if the parts show any indication of wear or damage, or if the cost of the individual part is less than \$25 (US). Parts returned within 30 days of purchase will be valued at a 20% restocking fee. no part may be returned after 30 days without AEROMOB's prior approval. Any parts approved for return after 30 days will be evaluated at a fee 50% restocking fee.

**AEROMOB**

# INTRODUCTION

This document is copyrighted. The total or partial copy of the text, images or tables without the authorization of AEROMOB is expressly prohibited, subjecting the violator to the appropriate civil and criminal penalties.

**AEROMOB**

# REVISION

Revision Number	Date

To access the updated version of this document, point your device at the QR CODE below

MANUAL



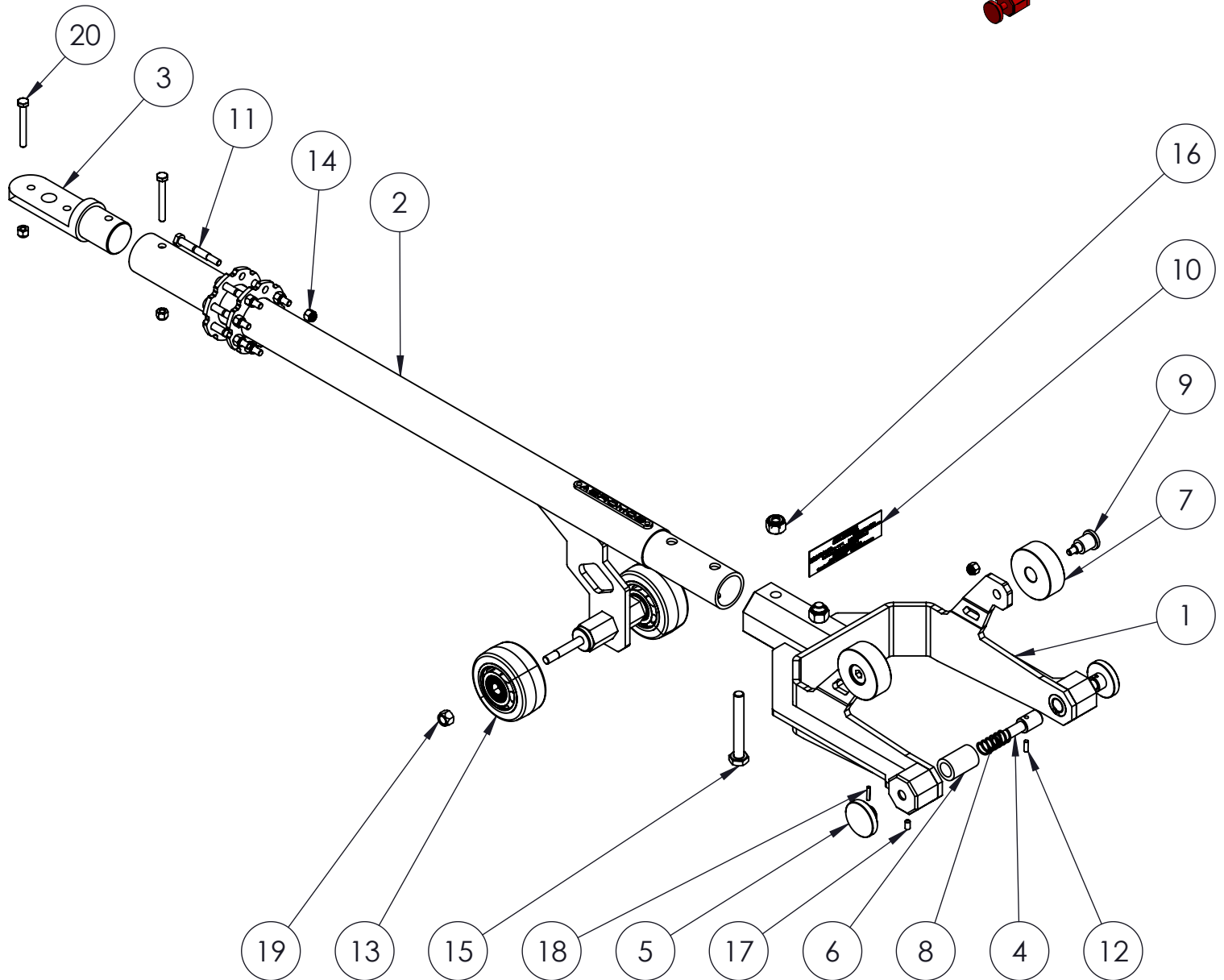
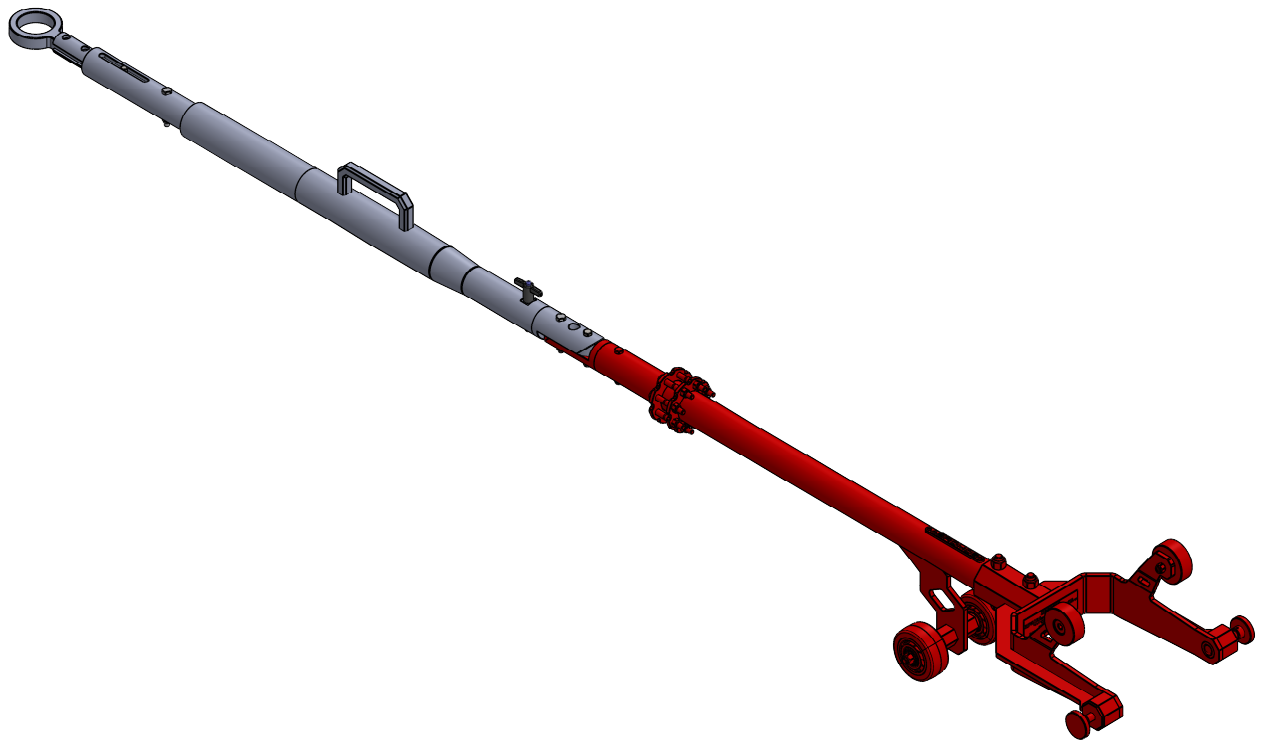
PN: AM-FRK-109-K01

[www.aeromob.com.br/support-am-frk-109-k01](http://www.aeromob.com.br/support-am-frk-109-k01)

# SUMMARY

CHAPTER 1 - ASSY FORK .....	1-1
COMPONENTS LIST .....	1-2
CHAPTER 2 - ASSY TOW .....	2-1
COMPONENTS LIST .....	2-2

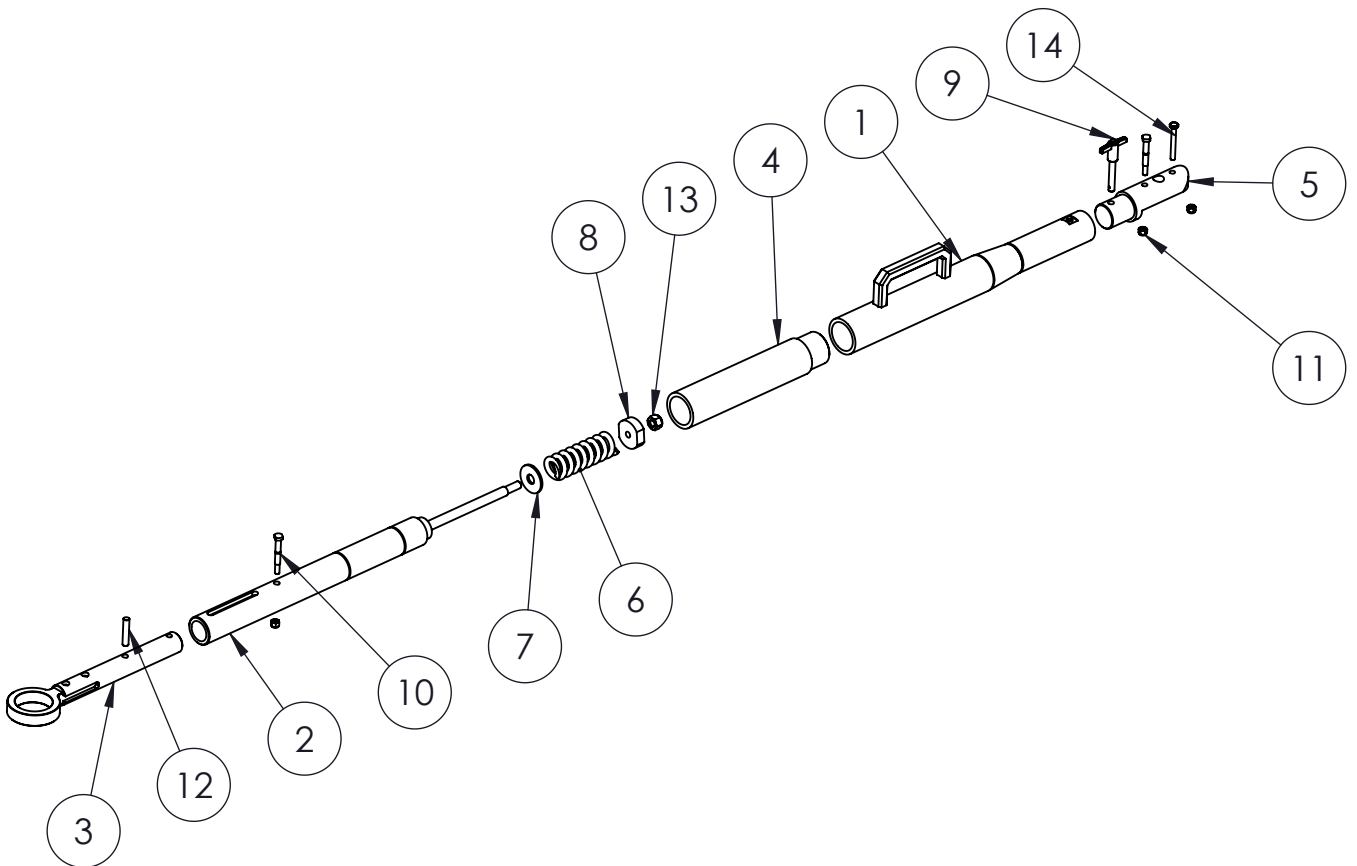
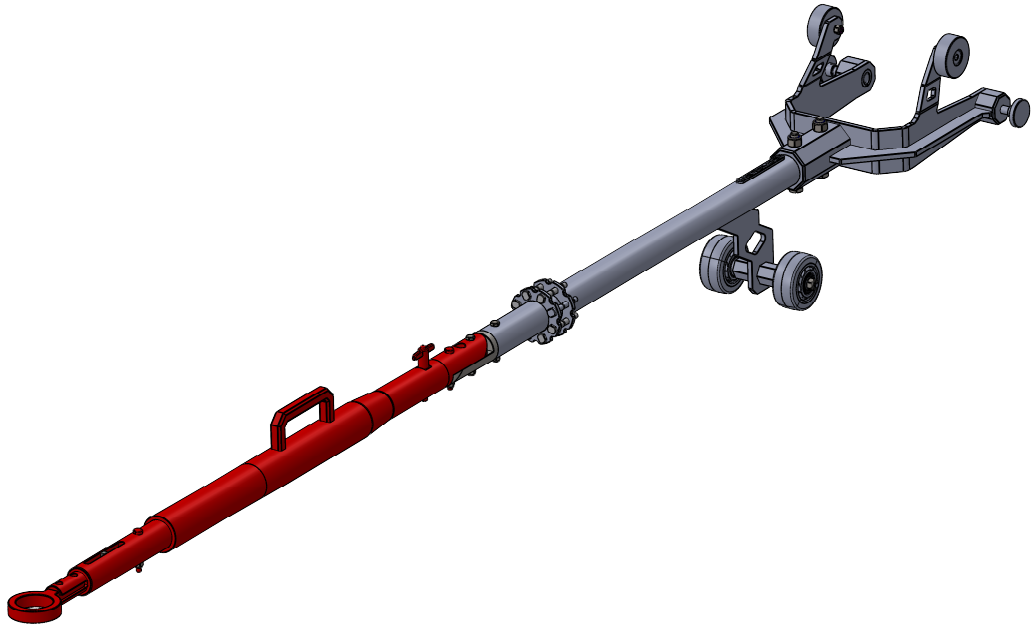
# CHAPTER 1 - ASSY FORK



**AEROMOB**

POS.	ACTIVE PN	DESCRIPTION	QTY IN THIS DRAWING	QTY EQUIPMENT	OLD PN	APPLICABLE TO SN	AVAIL
1	AM-FRK-109-S01	ASSY FORK	1	1	---	ALL	---
2	AM-FRK-109-S02	PRINCIPAL BODY	1	1	---	ALL	---
3	AM-FRK-109-019	ARTICULATION	1	1	---	ALL	---
4	AM-FRK-109-025	PIN LOCKS WHEEL	2	2	---	ALL	---
5	AM-FRK-109-026	STEERING WEEL	2	2	---	ALL	---
6	AM-FRK-109-027	BUSHING	2	2	---	ALL	---
7	AM-FRK-109-028	TOP WEEL	2	2	---	ALL	---
8	AM-FRK-109-030	SPRING	2	2	---	ALL	---
9	AM-FRK-109-031	TOP WHEEL PIN	2	2	---	ALL	---
10	AM-FRK-109-034	IDENTIFICATION PLATE	1	1	---	ALL	---
11	AM-FRK-109-036	SHEAR PIN	8	10	---	ALL	---
12	DIN6325 Ø4X12	GUIDE PIN Ø4 x 12 mm	2	2	---	ALL	---
13	R.312.BPA.E	CASTER COLSON Ø75mm	2	2	---	ALL	---
14	DIN982 M6	SELF-LOCKING HEX NUT M6	12	14	-	ALL	---
15	DIN933 M10X75	HEX SCREW M10 x 75	2	2	----	ALL	---
16	DIN982 M10	SELF-LOCKING HEX NUT M10	2	3	----	ALL	---
17	DIN913 M5X10	HEADLESS SCREW INNER HEX M5 x 10	2	2	---	ALL	---
18	DIN1481 3X16	ELASTIC PIN Ø4 x 16	2	2	---	ALL	---
19	INOX DIN982 M8	SELF-LOCKING HEX NUT M8	2	2	---	ALL	---
20	INOX DIN933 M6X50	SCREW HEAD CYL HEX INT M6 x 50	2	3	---	ALL	---

# CHAPTER 2 - ASSY TOW



POS.	ACTIVE PN	DESCRIPTION	QTY IN THIS DRAWING	QTY EQUIPMENT	OLD PN	APPLICABLE TO SN	AVAIL
1	AM-FRK-109-S03	SLEEVE	1	1	---	ALL	---
2	AM-FRK-109-S04	DRAWBAR	1	1	---	ALL	---
3	AM-FRK-109-S05	EYEPIECE	1	1	---	ALL	---
4	AM-FRK-109-S06	SECOND SLEEVE	1	1	---	ALL	---
5	AM-FRK-109-020	ARTICULATION	1	1	---	ALL	---
6	AM-FRK-109-022	COMPRESSION SPRING	1	1	---	ALL	---
7	AM-FRK-109-023	SPRING STOP WASHER	1	1	---	ALL	---
8	AM-FRK-109-024	SPRING RETAINER	1	1	---	ALL	---
9	AM-FRK-109-033	QUICK PIN	1	1	---	ALL	---
10	AM-FRK-109-036	SHEAR PIN	2	10	---	ALL	---
11	DIN982 M6	SELF-LOCKING HEX NUT M6	3	15	-	ALL	---
12	DIN6325 8X40	GUIDE PIN Ø8 x 40	1	1	---	ALL	---
13	DIN982 M10	SELF-LOCKING HEX NUT M10	1	3	----	ALL	---
14	INOX DIN933 M6X50	SCREW HEAD CYL HEX INT M6 x 50	1	3	---	ALL	---