





Aeromob Equipamentos Aeronáuticos Ltda

CNPJ: 40.061.679/0001-43

Address: 990 Carlos Willy Boehm St.

Costa e Silva - Joinville - SC - Brazil

ZIP code: 89218-325

Phone number BRAZIL: +55 (47) 4101-2724 | +55 47 99937-9077

Phone number USA: +1 469 851-9078

www.aeromob-industry.com

Contact Aeromob for more information about parts and products.

INTRODUCTION

The Illustrated Parts Catalog (IPC) must be used to identify parts and component replacement request. The IPC should never be used as a component removal, installation and maintenance procedure. This catalog is used in conjunction with the Equipment Maintenance Manual (MM). The illustrations featured in this IPC are based on iSpec 2200 requirements and specifications, adapted for GSE products.

The catalog features:

1. A list of chapters;
2. An isometric view of the equipment with emphasis on the set shown in the chapter;
3. An exploded view of each equipment set and its respective list of components;
4. The numbering of the pages is composed initially by the number of the chapter and followed by chapter page number.

PART DESIGNATION

AEROMOB parts are designated using the following code:

AM-HDM-135-S01

such that,

AM: AEROMOB

HDM: Represents the family of equipment

135: the equipment model

S01: represents the part-specific code.

On standard components purchased from third parties such as screws bearings, etc., the codes are varied, according to the necessary specification in each item. In some cases, manufacturers codes are also used.

AEROMOB special tools are designated with an "FM" prefix keeping then the identification code of the equipment to which it is applied.

PARTS AVAILABILITY

"YES" indicates the part is available as a separate replacement item.

"NO" indicates that the part is no longer available or is only available as part of a set.

ABBREVIATIONS

BICROM - Bichromated

CL - Class

DISP - Parts availability

SS - Stainless steel

HS - Hexagon socket

WS - Worm shaft

TS - Top Shaft

WARRANTY

AEROMOB applies the standard 1-year warranty on parts and components purchased from AEROMOB or an authorized dealer.

This document is copyrighted. The total or partial copy of the text, images or tables without the authorization of AEROMOB is expressly prohibited, subjecting the violator to the appropriate civil and criminal penalties.

Revision Number	Date

To access the updated version of this document, point your device at the QR CODE below.

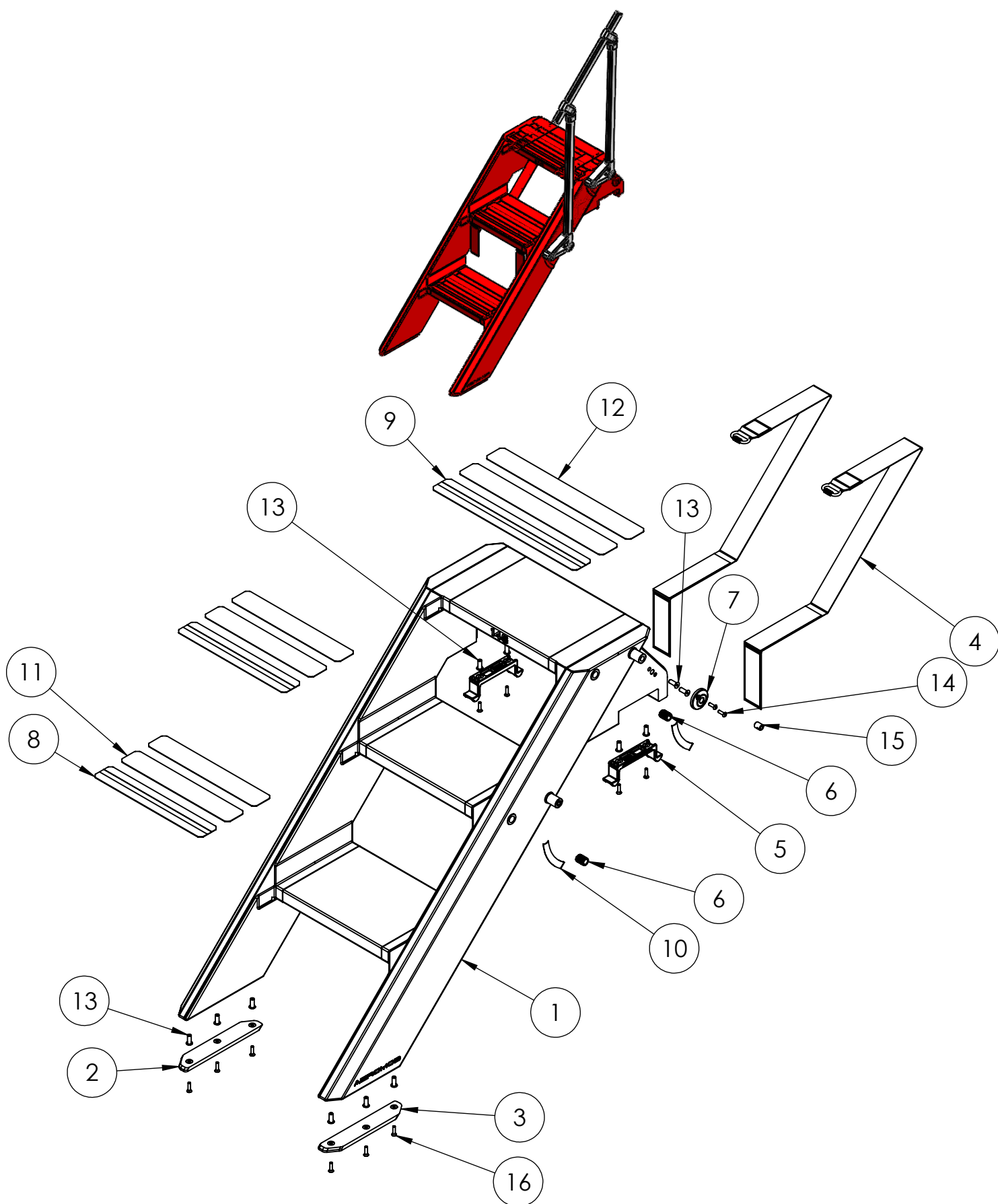


www.aeromob-industry.com/support-am-ldr-145-k02

CHAPTER 1 - BODY.....1-1
BILL OF MATERIALS1-2

CHAPTER 2 - HANDRAIL	2-1
BILL OF MATERIALS	2-2

CHAPTER 1 - BODY

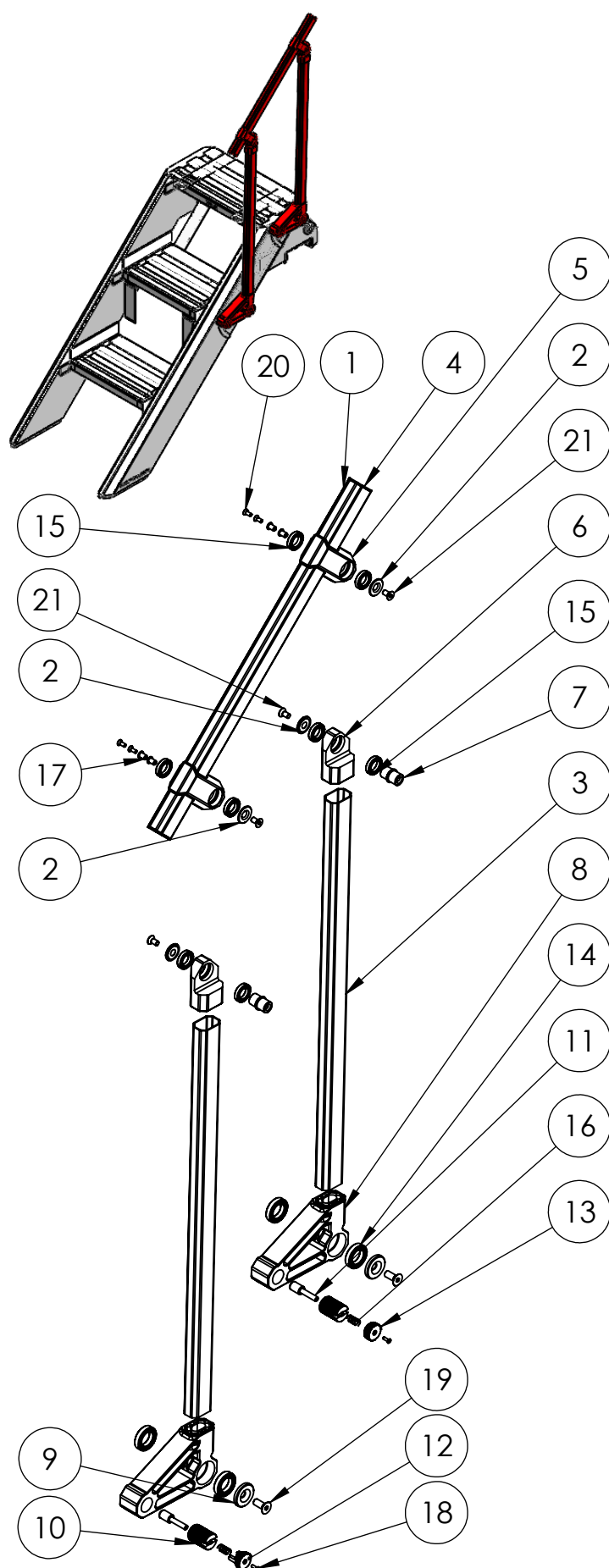


AEROLADDER 145

IPC-AM-LDR-145-K02

POS	ACTIVE PN	DESCRIPTION	QTY IN THIS DRAWING	QTY EQUIPMENT	OLD PN	APPLICABLE TO SN	AVAIL
1	AM-LDR-145-001-K04	BODY	1	1	---	ALL	---
2	AM-LDR-145-010	LOWER LEFT SUPPORT	1	1	---	ALL	---
3	AM-LDR-145-011	LOWER RIGHT SUPPORT	1	1	---	ALL	---
4	AM-LDR-145-022	CARRYING STRAP	2	2	---	ALL	---
5	AM-LDR-145-024	UPPER SUPPORT	2	2	---	ALL	---
6	AM-LDR-145-032	THREADED BUSHING	2	2	---	ALL	---
7	AM-LDR-145-047	COVER	1	1	---	ALL	---
8	AM-LDR-145-050	SMALL REFLECTIVE ANTI-SLIP TAPE	2	2	---	ALL	---
9	AM-LDR-145-051	REFLECTIVE ANTI- SLIP TAPE	1	1	---	ALL	---
10	AM-LDR-130-034	RH ANTI SCRATCH	2	2	---	ALL	---
11	AM-LDR-135-007	SMALL ANTI-SLIP TAPE	4	4	---	ALL	---
12	AM-LDR-135-010	ANTI-SLIP TAPE	2	2	---	ALL	---
13	REBR M5X20	BIC RIVET NUT M5 x 20	12	12	---	ALL	---
14	DIN7380 M5X16	SS - HS BUTTON H SCREW M5x16 CLASS 5.8	2	2	---	ALL	---
15	RP-M8xM12x15	THREADED INSERT M8xM12x15	2	2	---	ALL	---
16	INOX DIN 7991 - M5 X 20	SS - HS COUNTERSUNK HC SCREW M5X20	10	10	---	ALL	---

CHAPTER 2 - HANDRAIL



AEROLADDER 145

IPC-AM-LDR-145-K02

POS	ACTIVE PN	DESCRIPTION	QTY IN THIS DRAWING	QTY EQUIPMENT	OLD PN	APPLICABLE TO SN	AVAIL
1	AM-HDR-155-001	HANDRAIL BODY	1	1	---	ALL	---
2	AM-HDR-155-003	SPECIAL WASHER	4	4	---	ALL	---
3	AM-HDR-155-004	VERTICAL ROD	2	2	---	ALL	---
4	AM-HDR-155-006	END COVER	2	2	---	ALL	---
5	AM-HDR-155-008	HANDRAIL BODY SUPPORT	2	2	---	ALL	---
6	AM-HDR-155-009	HINGE SUPPORT	2	2	---	ALL	---
7	AM-HDR-155-019	BEARING SHAFT	2	2	---	ALL	---
8	AM-HDR-155-020	LH MAIN SUPPORT	2	2	---	ALL	---
9	AM-HDR-155-021	RETAINING WASHER	2	2	---	ALL	---
10	AM-HDR-155-024	GUIDE SCREW	2	2	---	ALL	---
11	AM-HDR-155-025	LOCK PIN	2	2	---	ALL	---
12	AM-HDR-155-026	LOCK BUTTON	1	1	---	ALL	---
13	AM-HDR-155-027	KNOB	1	1	---	ALL	---
14	ROL 61804-2RS1	BEARING	4	4	---	ALL	---
15	ROL 61802-2RS1	BEARING	8	8	---	ALL	---
16	MC 8X16X0.6	COMPRESSION SPRING Ø8X16XØ0.6	2	2	---	ALL	---
17	REBR M4X10	RIVET NUT M4X10	4	4	---	ALL	---
18	INOX DIN7991 M3X10	SS - HS COUNTERSUNK HC SCREW M3 x 10	2	2	---	ALL	---
19	INOX DIN7991 M8X20	SS - HS COUNTERSUNK HC SCREW M8 X 20	2	2	---	ALL	---
20	INOX DIN7991 M4X10	SS - HS COUNTERSUNK HC SCREW M4X10	4	4	---	ALL	---
21	DIN7991 M6X12	SS SCREW FLAT HEAD HEX INT M6 x 12	4	4	---	ALL	---